

MONTHLY MEMBERSHIP PROGRESS REPORT

District 23 B

Results as of: 4/30/2026

GMT:

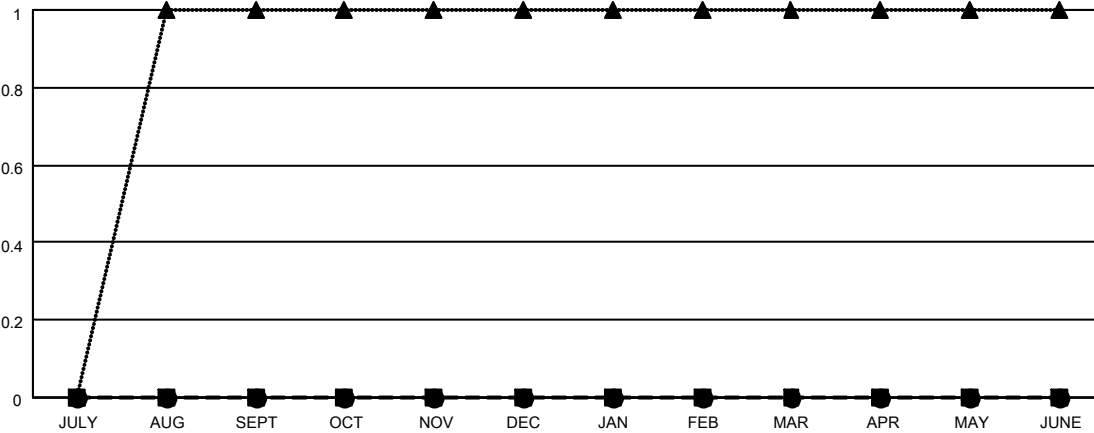
LOCATION CONNECTICUT

GMT CA

Clubs			
RESULTS FOR 2025-2026			
QUARTER	NEW CLUB GOAL	NEW CLUBS	DROPPED CLUBS
JULY/AUG/SEPT	0	0	0
OCT/NOV/DEC	0	0	1
JAN/FEB/MAR	0	0	0
APR/MAY/JUNE	0	0	0

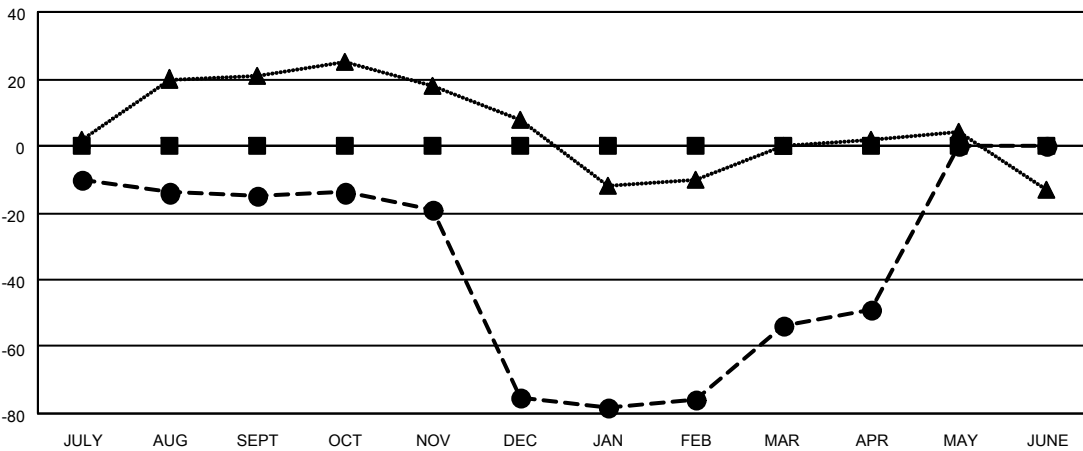
Members			
RESULTS FOR 2025-2026			
QUARTER	MEMBER GROWTH NET GOAL	MEMBER GROWTH ACTUAL	DROPPED MEMBERS ACTUAL (including transfers)
JULY/AUG/SEPT	0	25	37
OCT/NOV/DEC	0	48	106
JAN/FEB/MAR	0	61	35
APR/MAY/JUNE	0	17	9

GOALS AND ACTUAL NEW CLUBS CUMULATIVE



- - CURRENT YEAR GOALS FOR NEW CLUBS
- - CURRENT YEAR ACTUAL NEW CLUBS
- ▲ - LAST YEAR ACTUAL NEW CLUBS

GOALS AND ACTUAL MEMBERS CUMULATIVE



- - MEMBER GROWTH NET GOAL
- - MEMBER GROWTH ACTUAL
- ▲ - LAST YEAR MEMBERSHIP ACTUAL

DROPPED CLUBS: 1	39 CLUBS OF 56 ADDED 1 OR MORE NEW MEMBERS	GENDER DISTRIBUTION
		MALE 1,085 (62.11%)
		FEMALE 662 (37.89%)
DROPPED MEMBERS	CLICK HERE FOR CUMULATIVE MEMBERSHIP DATA	TOTAL FAMILY UNIT MEMBERS 339
DECEASED 15		FAMILY MEMBERS PAYING HALF DUES 177
CLUB CANCELLED 10		
OTHER 161		
TOTAL 186		